

WORTHAM CENTER FOR THE PERFORMING ARTS TINA MGUIRE THEATRE

TECHNICAL INFORMATION

Managing Director: Rae Geoffrey 828-210-9837 rae@worthamarts.org

Technical Manager Tina McGuire Theatre: Ean Moran 828-337-9259

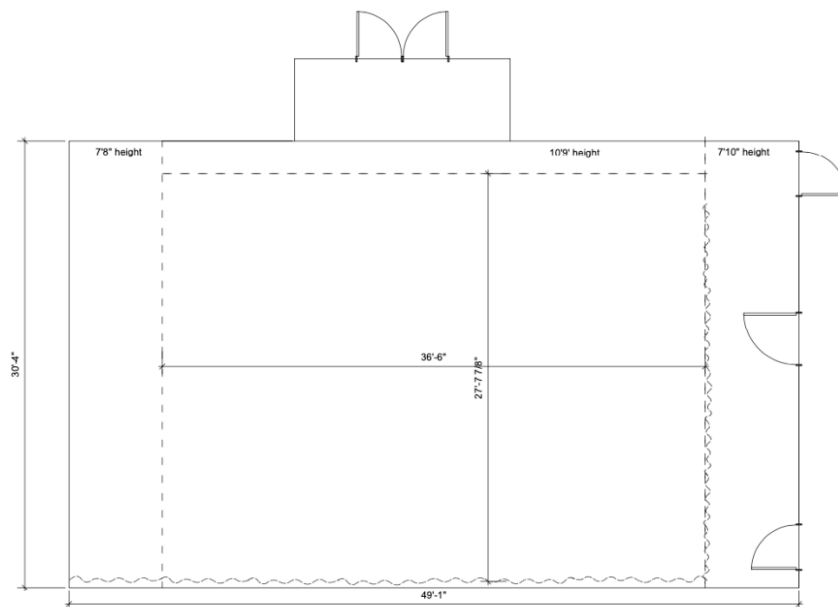
Technical Director: Jeff Zielinski 828-772-9741 jeff@worthamarts.org

Production Manager: Mark Searce 828-772-9751 mark@worthamarts.org

Operations Manager: Steven Hunt 828-210-9850 steven@worthamarts.org

THE TINA MGUIRE THEATRE IS A FLEXIBLE BLACK BOX THEATRE WITH SEATING UP TO 85 PEOPLE AND CAN BE ALTERED TO HOST A VARYING ARRAY OF RECEPTIONS AND SPECIAL EVENTS.

DIMENSIONS



DRESSING ROOMS

2 DRESSING ROOMS AND ARTIST GREEN ROOM AREA

LIGHTING

ETC ION XE CONSOLE

16 ETC COLOR SOURCE SPOT V

8 ETC COLOR SOURCE PAR RGBL LED

SOUND

4 DB TECHNOLOGIES VIO-X10 2-WAY ACTIVE POINT SOURCE SPEAKERS

1 YAMAHA MG16 X ANALOG SOUND CONSOLE

1 Wireless Shure Handheld Microphone

Various Dynamic and Condenser Microphones are available.

PROJECTION

1 VIVITEK DH3660Z COMPACT 4500 LUMEN MULTIMEDIA WUXGA 3D LASER PROJECTOR

(MOUNTED IN GRID WITH AN HDMI CABLE RUN TO TECH STATION)

1 Portable Projector Screen. The screen is 120-inch Diagonal, 16:9 Aspect Ratio.

Size: 59" H x 104" W

SOFT GOODS

2 TRAVELER TRACKS WITH BLACK VELVET SOUND DAMPENING CURTAINS ON THE EAST AND WEST SIDE OF THE THEATRE.

STAGING / SEATING RISERS

(9) 4X8 RISERS WITH LEGS AVAILABLE AT 8", 16", 24", AND 32" HEIGHTS FOR SEATING OR STAGING CONFIGURATIONS.

